

## Another Problem Solved by PipeServ

**Location: Offshore Facility, Australia**

**Application: Fuel Gas Line Repair**

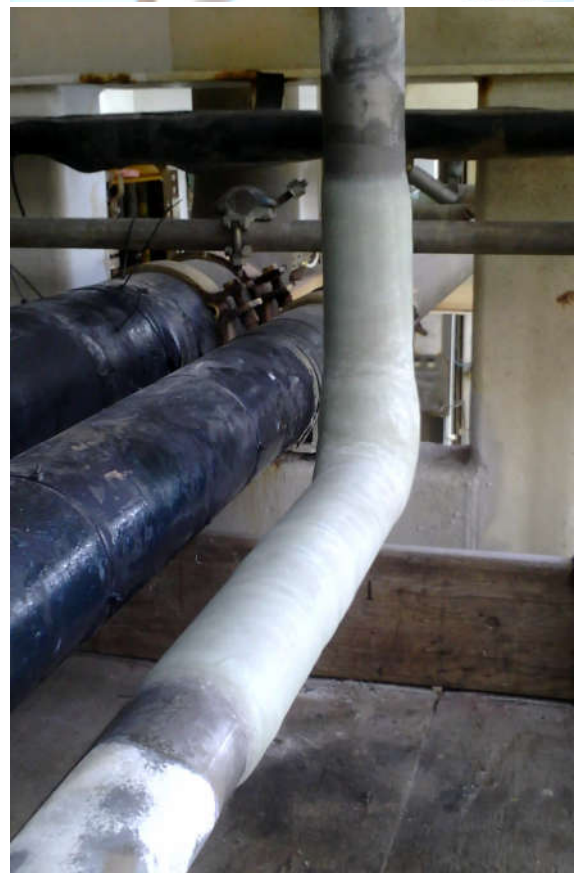
PipeServ was able to offer a solution for the repair of a fuel gas line on an offshore facility. After the review of NDT inspection reports, it was confirmed the external wall loss was significant and would require repair to allow for continued operations.

The decision was to repair this pipeline using the ClockSpring|NRI Contour composite wrap (as opposed to cutout) as this repair could be completed online. Engineering was conducted to confirm the repair design, the number of wraps and the length of repair required to meet the pipeline design. This engineering accounts for the pipe materials, pipeline product, design pressure, design temperature and nominated operational life.

Note: This composite wrap can be designed for both temporary and permanent repair. In this instance; the repair was designed for 20year service life.

One of the major benefits of using ClockSpring|NRI Contour composite wraps is that the complete repair can be conducted online and with no loss of production.

ClockSpring|NRI Contour was supplied and installed by PipeServ Technicians to comply with engineering design, procedures and clients permit requirements.



<b>Pipeline Size:</b>	<b>DN80</b>
<b>Design Pressure:</b>	<b>16.2 Bar</b>
<b>Design Temperature:</b>	<b>-29°C to +70°C</b>

**Ph: +61 7 3161 6600**

**Email: info@pipeserv.com**

**Web: www.pipeserv.com**