

## Another Problem Solved by PipeServ

**Location: Offshore Western Australia**

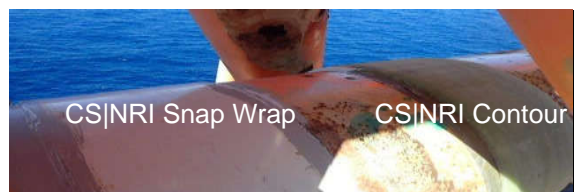
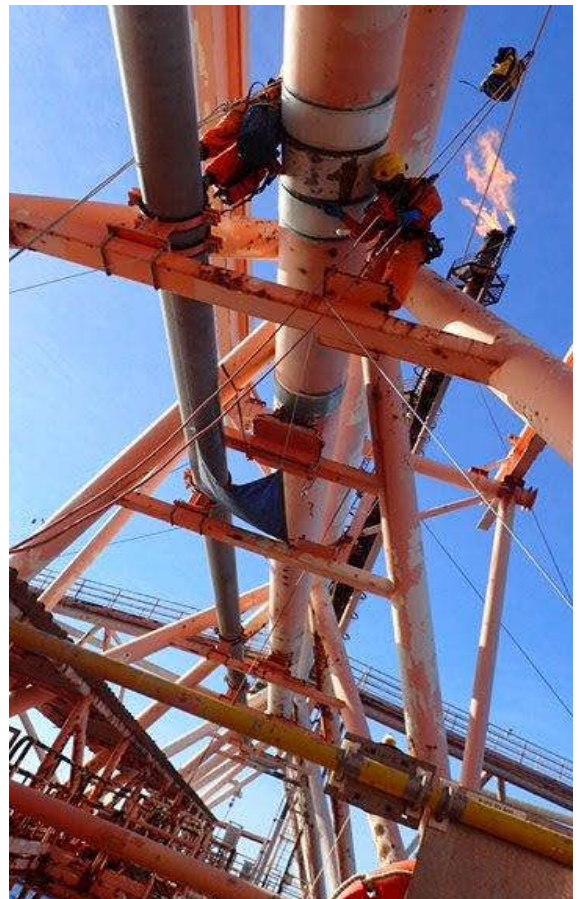
**Application: Flare Line – Offshore Facility**

PipeServ was able to offer a permanent repair solution to this 30” HP Flare Blow Down Line. Inspection of this line found a large number of corrosion blisters that (on further inspection) were confirmed as requiring repair to prevent the possibility of a leak and unplanned facility shutdown.

This pipeline transports flare gases and cannot be taken offline for repair. Radiant heat from the flare meant that any repair must also be capable of withstanding these high temperatures. Another issue when working on this flare line is that all workers must be able to evacuate quickly should a flare be triggered. Add to this the available access meant all work (pipe cleaning, repair application and re-coating) had to be completed by rope access technicians.

Due to the location of the anomalies, some being adjacent to pipe shoes/supports, we elected to use both ClockSpring|NRI Snap Wrap and Contour composite wraps. Snap Wrap on straight pipe sections and Contour when we needed the flexibility of wrapping over or around these pipe shoes.

Both products exceeding pipeline design pressures and temperatures. ClockSpring|NRI Snap Wrap composite wrap is rated for a design life of 50 years while the ClockSpring|NRI Contour wrap has a 20yr design life. The whole exercise being completed on-line, with no incidents or near misses.



Nominal Pipe Size:	DN750
Nominal Wall Thickness:	9.5mm
Design Pressure:	5 Bar
Design Temperature:	-10°C to +90°C (higher at flare)